

# Data Literacy



## Types of Assessments



### Screening

To determine children who are likely to require additional instructional support



### Diagnostic

To provide information on specific needs of individual students



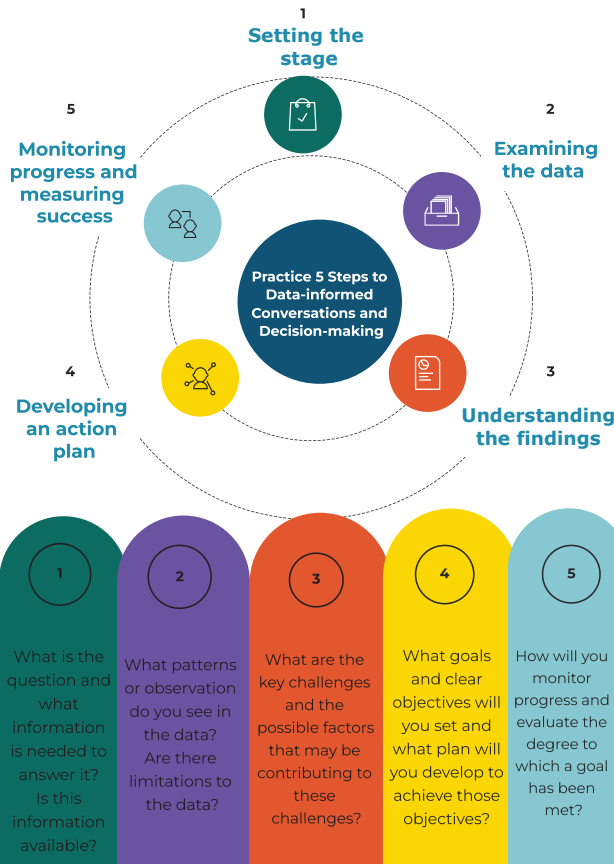
### Progress Monitoring

To determine whether students are making adequate progress towards critical skills



### Outcome

To determine level of proficiency in relation to norm or criterion



<p>1</p> <p>What is the question and what information is needed to answer it? Is this information available?</p>	<p>2</p> <p>What patterns or observation do you see in the data? Are there limitations to the data?</p>	<p>3</p> <p>What are the key challenges and the possible factors that may be contributing to these challenges?</p>	<p>4</p> <p>What goals and clear objectives will you set and what plan will you develop to achieve those objectives?</p>	<p>5</p> <p>How will you monitor progress and evaluate the degree to which a goal has been met?</p>
--	---	--	--	---

## Using Data to Inform Instruction

### Instructional Intensifications



Increase explicit instruction



Increase practice opportunities



Make instruction more systematic



Increase corrective feedback



Provide strategies



Provide support for generalization

literacy@virginia.edu  
@VLP\_UVA

Virginia Literacy Partnerships

Copyright © 2022 by the University of Virginia.

UNIVERSITY OF VIRGINIA SCHOOL OF EDUCATION AND HUMAN DEVELOPMENT