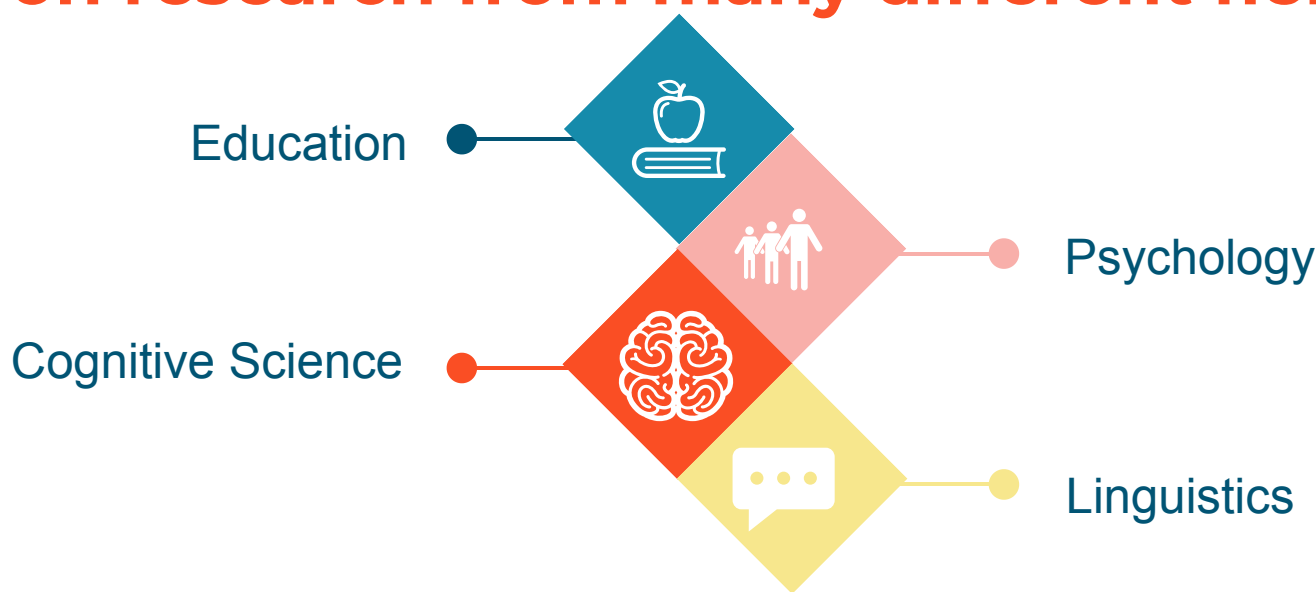


# WHAT IS SCIENCE-BASED READING RESEARCH?

Science-based reading instruction is based on research from many different fields



- Research identifies important content and teaching methods.
- Science-based reading research leads to science-based reading instruction.

## SCIENCE-BASED READING RESEARCH:



...recognizes that learning to read doesn't happen naturally, so it must be taught



...focuses on decoding (sounding out) words AND understanding what they mean



...identifies explicit instruction as an effective and efficient method for teaching reading skills

## SCIENCE-BASED READING RESEARCH DOES NOT:



...endorse a specific literacy program or curriculum



...focus only on students with dyslexia or reading difficulties



...recommend a one-size-fits-all approach

For more information for families, visit [literacy.virginia.edu](http://literacy.virginia.edu)